



BbΔ7 Bbm7

16

Eb7 AbΔ7 Gm7b5 C7#9

18 3

Fm7 C7#9 Fm7 F7#9

21

Bbm7 F7#9 Bbm7

25

F7 Bbm7 Eb7

28

Cm7b5 F7b9 Bbm7

31

Eb7 AbΔ7 Gm7b5 C7#9

34

Fm7 C7#9 Fm7

37

F7#9 Bbm7 F7#9

40

Bbm7 Bb7 Dm7

43

G7 CA7 C#m7 F#7

46

BΔ7 Cm7 F7

49 3

BbΔ7

51

Bbm7 Eb7 AbΔ7

53 3

Gm7b5 C7#9 Fm7 C7#9 Fm7

F7#9 Bbm7 F7#9 Bbm7

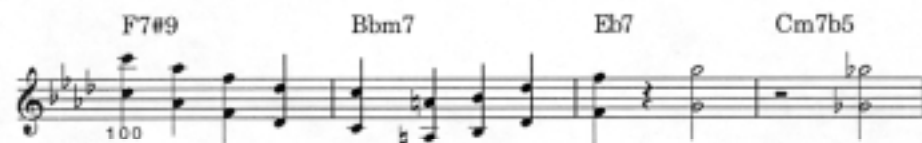
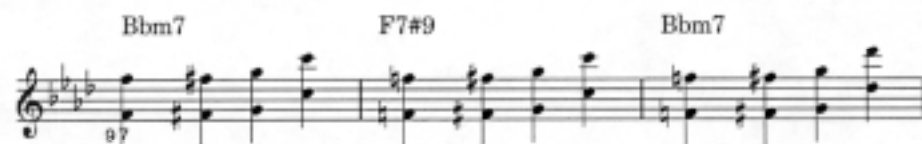
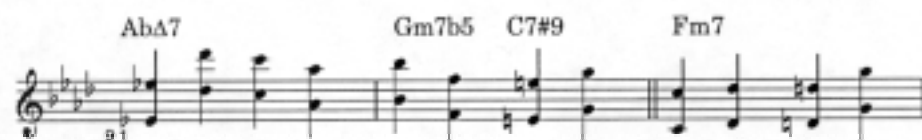
F7 Bbm7 Eb7

Cm7b5 F7#9 Bbm7

Eb7 AbΔ7 Gm7b5 C7#9

Fm7 C7#9 Fm7 F7#9

Bbm7 F7#9 Bbm7 Bb7



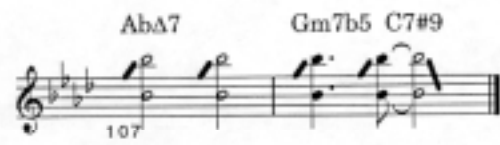
F7#9 Bbm7 Eb7



104

Detailed description: This musical staff contains measures 104, 105, and 106. Measure 104 starts with a treble clef, a key signature of three flats (B-flat major/C minor), and a common time signature. The first chord is F7#9. The melody consists of a dotted quarter note F4, an eighth note G4, a quarter note A4, and a quarter note B4. Measure 105 features a Bbm7 chord and a melody of a dotted quarter note B3, an eighth note A3, a quarter note G3, and a quarter note F3. Measure 106 has an Eb7 chord and a melody of a dotted quarter note Eb4, an eighth note D4, a quarter note C4, and a quarter note B3. The staff ends with a double bar line.

AbΔ7 Gm7b5 C7#9



107

Detailed description: This musical staff contains measures 107 and 108. Measure 107 starts with a treble clef, a key signature of three flats, and a common time signature. The first chord is AbΔ7. The melody consists of a dotted quarter note Ab4, an eighth note G4, a quarter note F4, and a quarter note Eb4. Measure 108 features a Gm7b5 chord and a melody of a dotted quarter note G4, an eighth note F4, a quarter note Eb4, and a quarter note D4. The staff ends with a double bar line.