

Current Biology, Volume 22

Supplemental Information

Measuring Internal Representations

from Behavioral and Brain Data

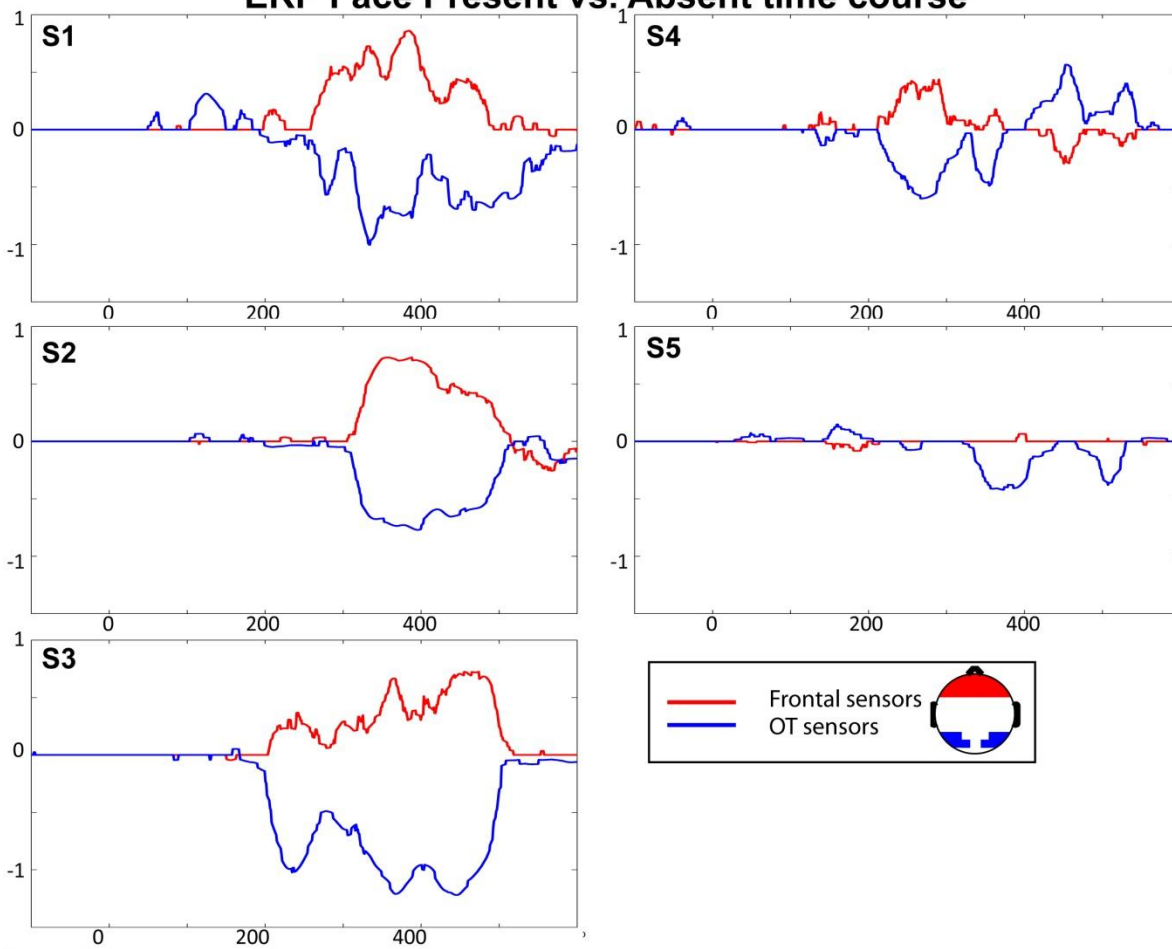
Marie L. Smith, Frédéric Gosselin, and Philippe G. Schyns

Figure S1, Related to Figure 2.

Top: Time course of significant differences in the “face present” percept ERP and in the “face absent” percept ERP over frontal (red) and occipitotemporal (blue) regions for each observer.

Bottom: Topographies of significant associations (z-scored, with respect to the prestimulus baseline) of single-trial EEG amplitude modulations with face-like information in the noise stimuli on trials classified as face present.

ERP Face Present vs. Absent time course



EEG Reverse Correlation: Topographies

